



WIRELESS ADAPTER RNX-G1LX

QUICK INSTALLATION GUIDE



For advanced configuration, refer to the User's Manual in the CD-ROM provided.

Installation

Warning! Do not cover or block the airflow to the adapter. The adapter will reach a high temperature during use.

Before you proceed with the installation, please notice the following descriptions.

Note1: The following installation was operated under Windows XP. (Procedures are similar for Windows 98SE/Me/2000/Vista.)

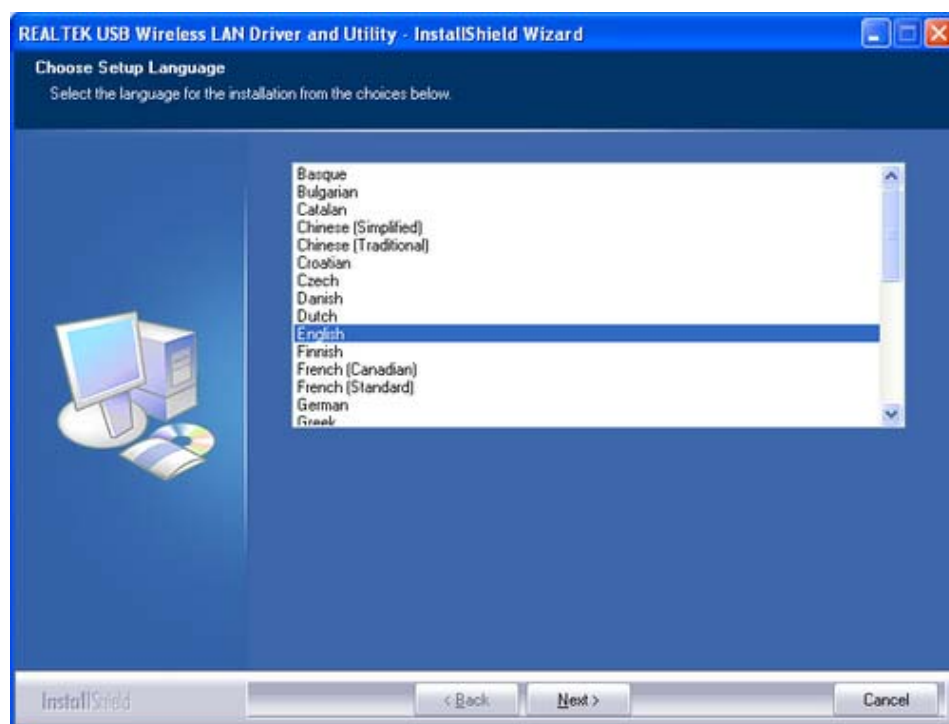
Note2: If you have installed any other WLAN USB driver & utility before, please uninstall the old version first.

Note3: Do not plug the wireless LAN USB adapter into your computer USB port before installing the software program

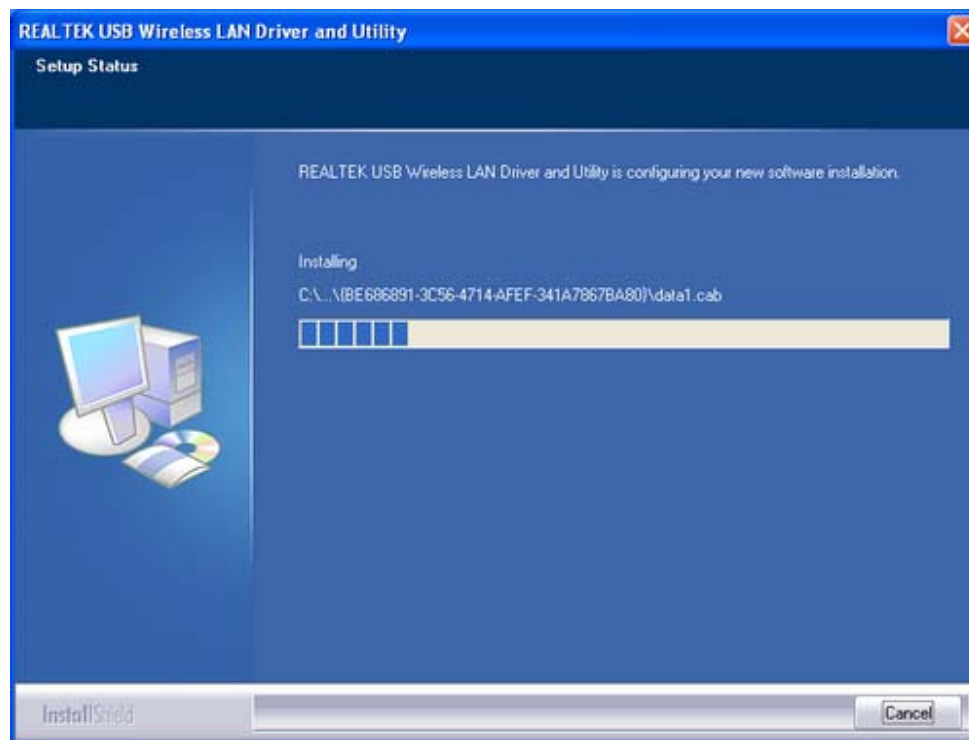
1. Insert the software program CD , then auto installation window pops up on following:
2. Click **Driver Installation**



3. Choose a set up language. Click **Next** to process the installation.

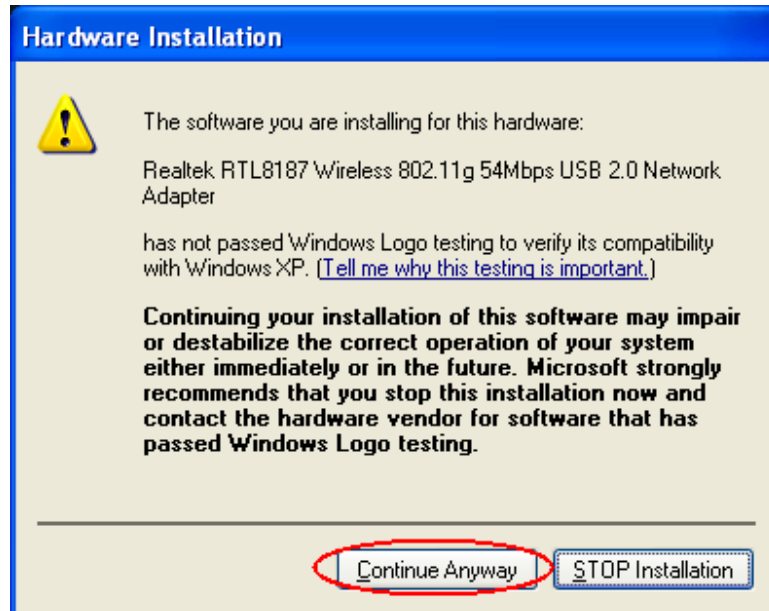


4. The system starts software installation of the WLAN USB adapter.

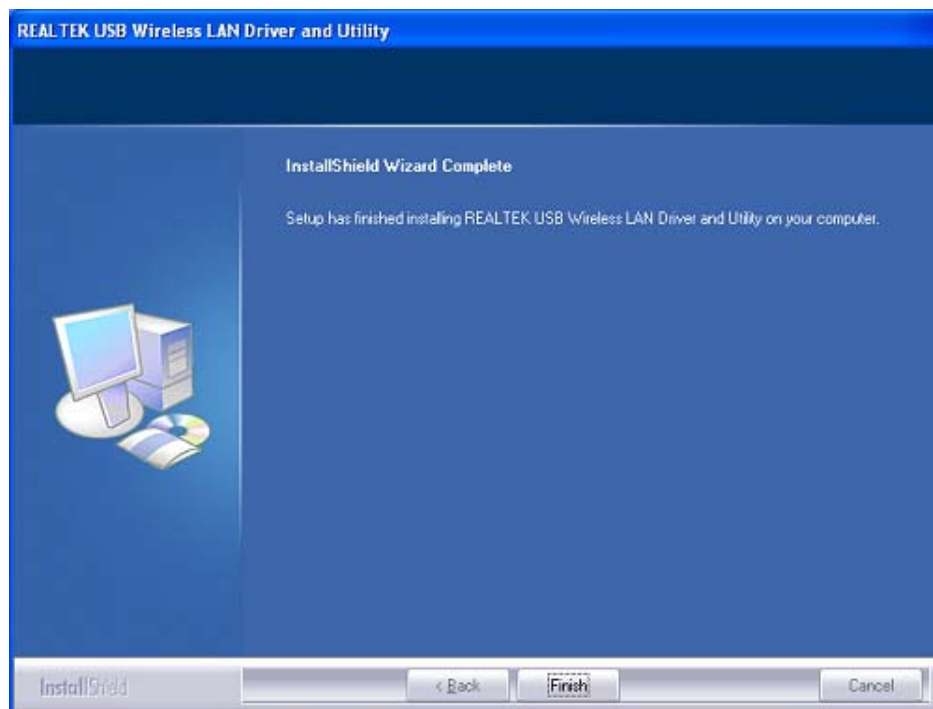


- On Windows Logo Software Installation screen, click **Continue Anyway** to continue.

Note: Not all the drivers will have this message box.



- Click **Finish** to complete the installation.



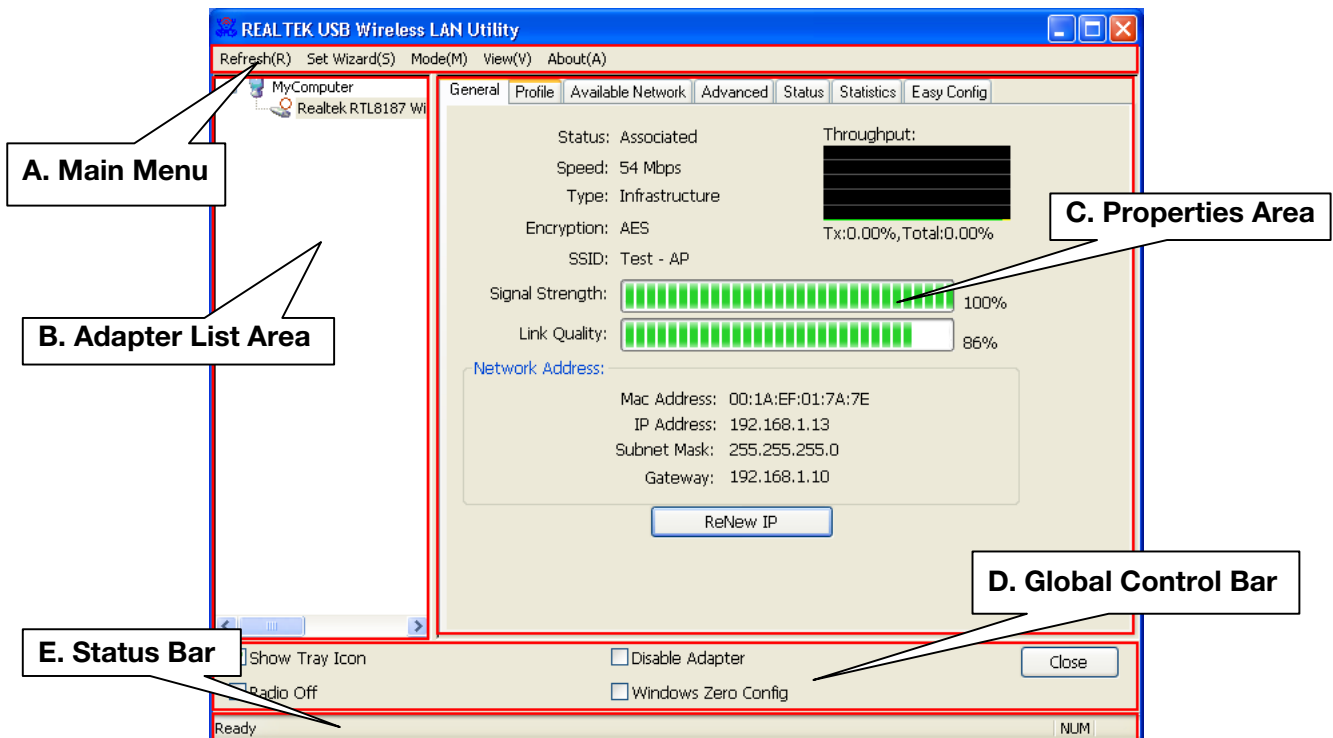
7. After click **Finish** to complete the installation , under Windows XP <ALL Programs> menu , REALTEK USB wireless LAN Utility program installed. Please reboot the system after all installation complete.



8. Insert the wireless LAN USB adapter into your computer USB port , the computer detected and active the wireless LAN USB adapter automatically.

Rt WLAN: Wireless LAN Management GUI

Introduction of Main Window



A. Main Menu

The main menu includes five submenus.

1. Refresh(R)

When clicking the refresh menu, you can update and re-enumerate the contents of adapter list area.

2. Set Wizard(S)

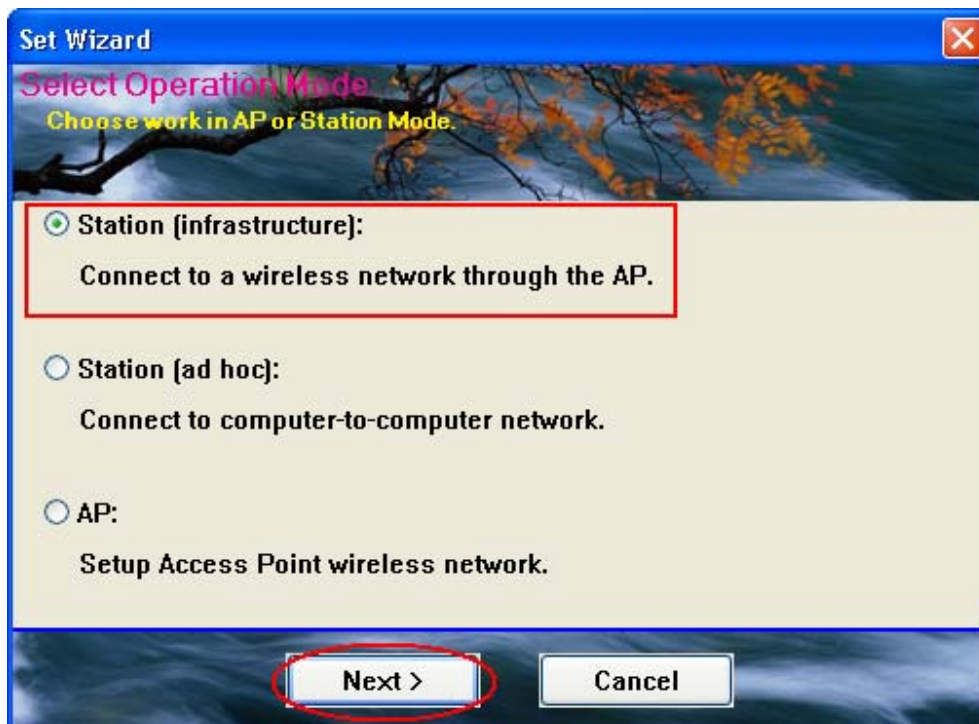
There are 2 modes for RNX-G1LX.

If you want to connect your computer directly to a wireless router,
please select station mode (2.1).

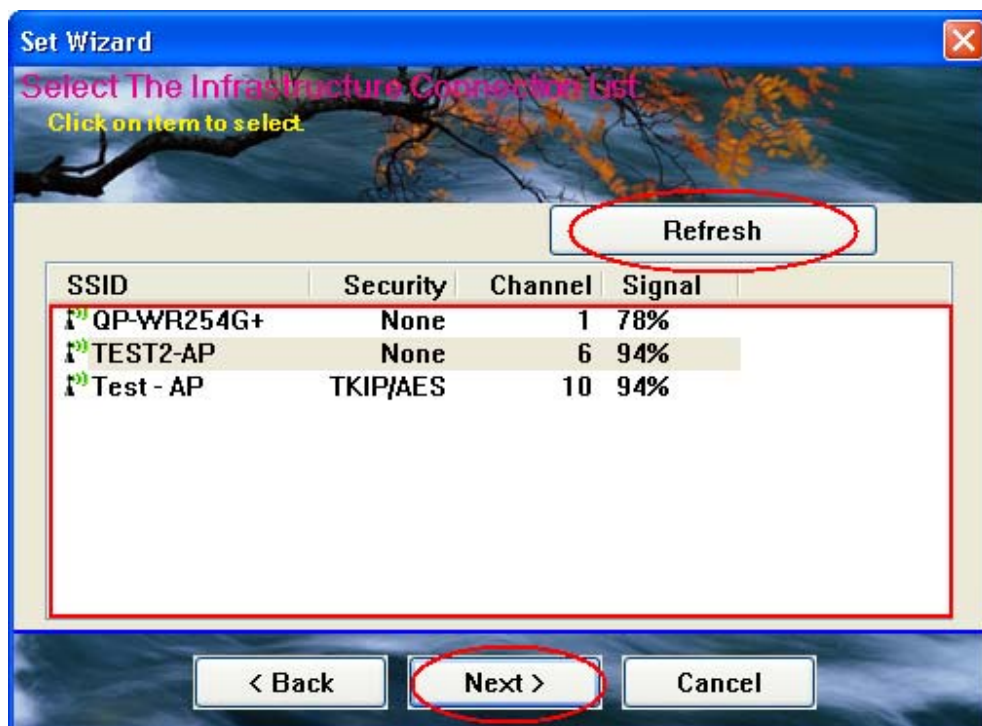
If you want to set up RNX-G1LX as an AP, please select AP mode (2.2)

2.1 Wizard-1 (station mode)

1. Select **Set Wizard(S)** then select **Station (infrastructure)** then click **Next**.



2. From red box you can access the AP you search or click **Refresh** button to search available AP.
Select one and click **Next**.

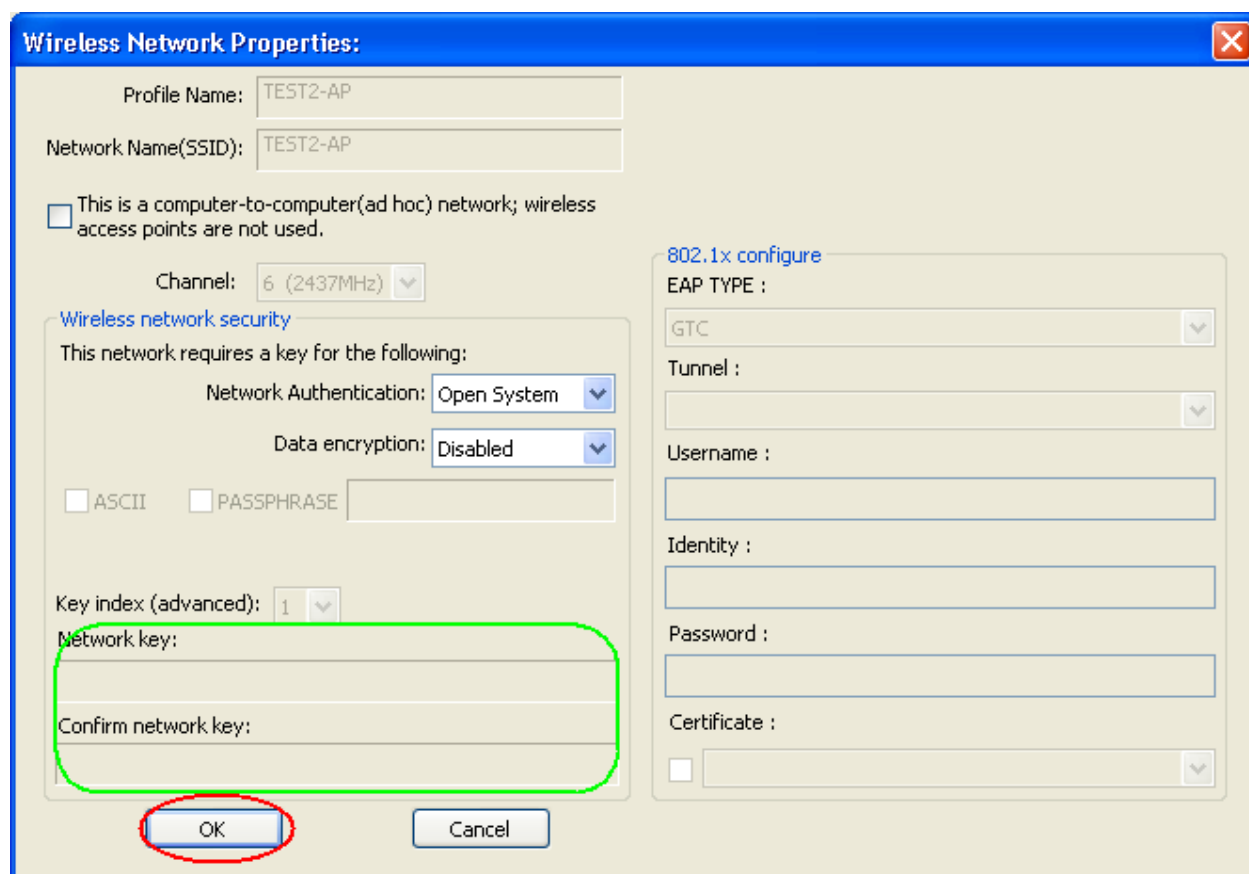


3. Click **OK**



4. Click **OK** to connect

If password is needed, you need to fill in password at green box. Click **OK** to connect.



The image shows a Windows-style dialog box titled "Wireless Network Properties:". It contains several fields and options for configuring a wireless network profile. The "Profile Name" and "Network Name (SSID)" are both set to "TEST2-AP". There is a checkbox for "This is a computer-to-computer (ad hoc) network; wireless access points are not used." which is unchecked. The "Channel" is set to "6 (2437MHz)". Under the "Wireless network security" section, it states "This network requires a key for the following:" and shows "Network Authentication" set to "Open System" and "Data encryption" set to "Disabled". There are checkboxes for "ASCII" and "PASSPHRASE", both of which are unchecked. The "Key index (advanced)" is set to "1". The "Network key" and "Confirm network key" fields are highlighted with a green rectangular box. The "OK" button is circled in red. On the right side, there is a section titled "802.1x configure" with fields for "EAP TYPE" (set to "GTC"), "Tunnel", "Username", "Identity", "Password", and "Certificate".

Wireless Network Properties:

Profile Name: TEST2-AP

Network Name (SSID): TEST2-AP

☐ This is a computer-to-computer (ad hoc) network; wireless access points are not used.

Channel: 6 (2437MHz)

Wireless network security

This network requires a key for the following:

Network Authentication: Open System

Data encryption: Disabled

☐ ASCII ☐ PASSPHRASE

Key index (advanced): 1

Network key:

Confirm network key:

OK Cancel

802.1x configure

EAP TYPE : GTC

Tunnel :

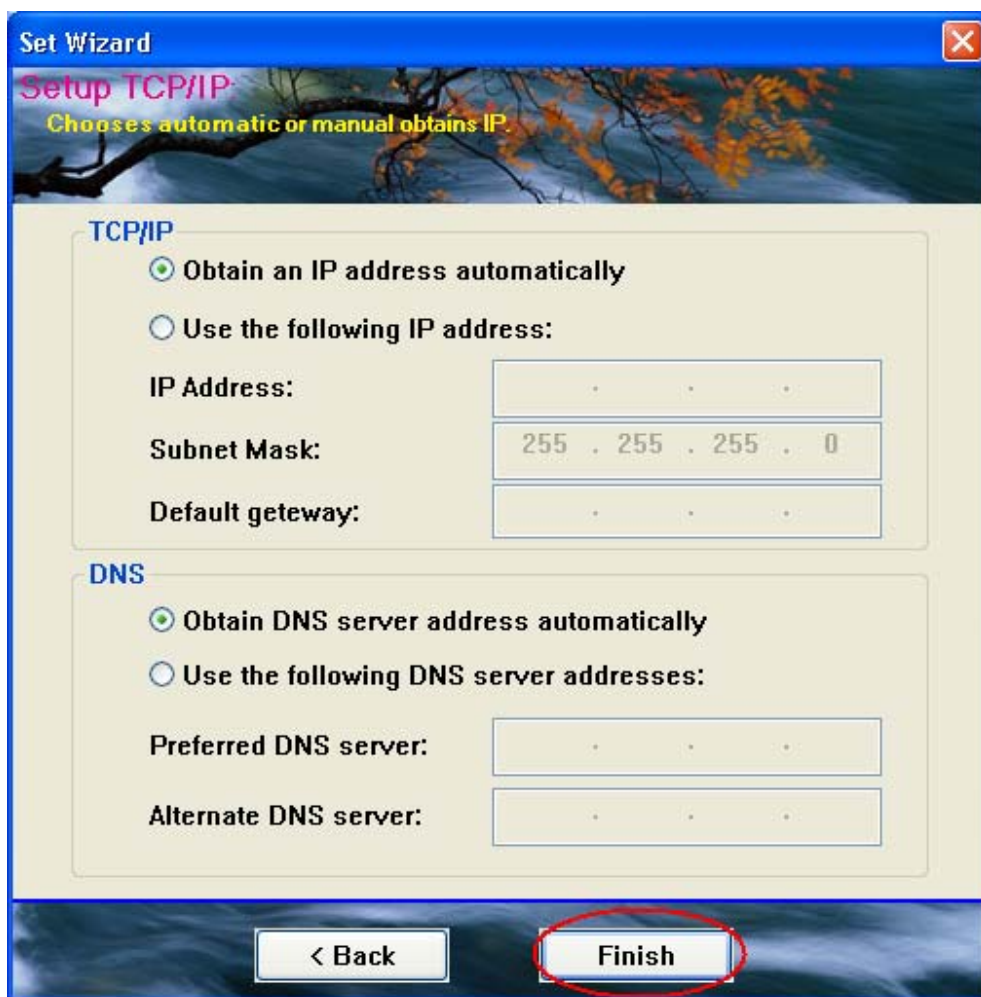
Username :

Identity :

Password :

Certificate :

5. Click Finish and now you can access to internet.



Thank you for purchasing a quality Rosewill Product.

Please register your product at : www.rosewill.com for complete warranty information and future support for your product.